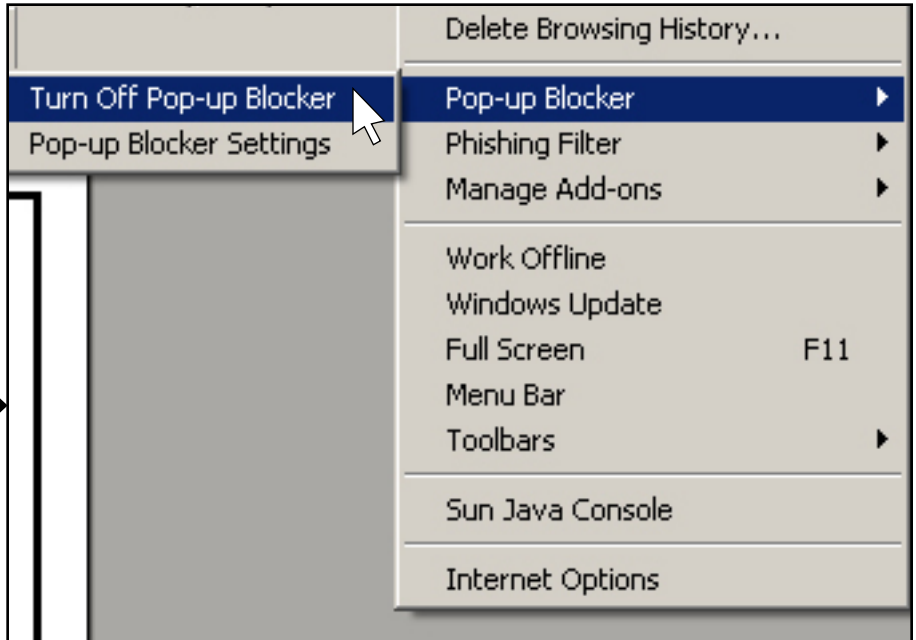


DEALERSHIP UNIVERSITY QUICK REFERENCE GUIDE

LEARNER COPY

Turn off the 'Pop-up Blocker' on your PC using the following steps:

1. Click on 'Tools' on the Microsoft Internet Explorer menu bar.
2. Click on 'Pop-up Blocker'.
3. Click on 'Turn Off Pop-up Blocker'



This graphic demonstrates how to turn off the Pop-up Blocker.

To log in:

Visit www.dealershipuniversity.com and click on the 'University Login' link enter your **username** and **password**.

Welcome to Dealership University!

Where Do I Begin?

[Administrators - Learn how to add users and more...](#)

[Users' Quick Reference Guide](#)



Username: (case-sensitive)

Password: (case-sensitive)

Enter your username and password at this screen.



To enter a course:

1. Click on 'eLearning Courses'.
2. Click on the course you would like to take.
3. Click 'GO' to launch the course.

 **College of eLearning**  [View Catalog](#)


A list of all of Dealership University's eLearning courses that are available 24/7, and provide the ability to quantify results and track progress through testing. Courses include Product Knowledge | Sales | F&I | Parts & Accessories | Service.


Click here to enter the College of eLearning.

 **2007 Features & Benefits**  [View Course Details](#)

2007 Features & Benefits

Click here to enter the course page.

 **2007 Features & Benefits**

 **GO**
Launch

Cost: \$FREE
Course Type: Online
Approximate Length: 30 minutes

Click the green 'GO' button to launch the course.